



BROKEN PERSPECTIVES

"In an East LA building, five undocumented immigrant stories unfold, each grappling with dreams and daily struggles, only to be ensnared in a surprise ICE raid that lays bare the oppressive systemic injustices and tests their resilience."

AUTHOR'S VISION

In *Broken Perspectives*, each character lives trapped in an invisible box: cramped apartments, exhausted routines, suffocating secrets. Their lives unfold indoors, serving as both refuge and prison. When the raid breaks out, those boxes burst open, and the entire community is ripped from their small worlds. The jail and the deportation bus become the final containers, where only memories of what was once home remain. This is a story about belonging, losing everything, and discovering that, even broken, we still search for a place to breathe.

Antonio Zamudio &
Ingrid Franklin Diaz.

SHORT SYNOPSIS

BROKEN PERSPECTIVES is a raw and emotional drama that follows the lives of five undocumented immigrants in an East LA building. Teresa and Don Chava, Sophia, Elena, Luz, and Max navigate their dreams, struggles, and the harsh reality of pursuing the American dream. When a routine fumigation unexpectedly turns into an ICE raid, the characters confront arrests, exposing the systemic injustices that shadow their lives. Centered on human resilience and love.



THE INSPIRATION BEHIND BROKEN PERSPECTIVES

In 2018, Antonio Zamudio and Ingrid Franklin Diaz began writing *Broken Perspectives*. Drawing inspiration from their Hispanic community in Los Angeles and deeply affected by the Trump era immigration policies, they crafted a narrative that captures the dreams and struggles of undocumented immigrants. Over seven years, they shaped this screenplay with the community as its central figure, brought to life through five characters whose lives intersect during an ICE raid. Each character represents a distinct aspect of the immigrant experience: sacrifice, resilience, and resistance. The story reveals how systemic decisions can shatter dreams, while also underscoring the enduring strength of love and community. Written in English with Spanish language scenes, this work aims to pay tribute to the Hispanic diaspora.

During these seven years, the script has been advised, supervised, and read by professional script-doctors.

IMPORTANT: In 2020, during the pandemic, co-writer Antonio Zamudio experienced a year of homelessness in Los Angeles, living in his car while continuing to write the screenplay via zoom meetings with co-writer Ingrid Franklin Diaz, who lived in Los Angeles too. The project had already been in development for two years, but that experience gave Antonio and shared with Ingrid a closer look at the invisible lives of those struggling to survive on the margins, immigrants, workers, and dreamers whose resilience fueled the emotional urgency of the story.



CONNECTION TO SOCIAL REALITY

BROKEN PERSPECTIVES urgently reflects the immigrant experience in the U.S., particularly in Los Angeles, where ICE raids pose a constant threat, resonating globally. According to the Migration Policy Institute (2023), California is home to over 2.2 million undocumented immigrants, many residing in Los Angeles County. ICE raids have surged by 15% since 2024 (ICE Enforcement Data, 2025). On June 6 and 7, 2025, large scale operations led to the arrest of over 200 individuals in LA, an event that mirrors the script's climax. **The story humanizes these statistics, portraying the profound impact on Latino communities: fear, family separation, and the relentless fight for dignity.**



Reference Filmography

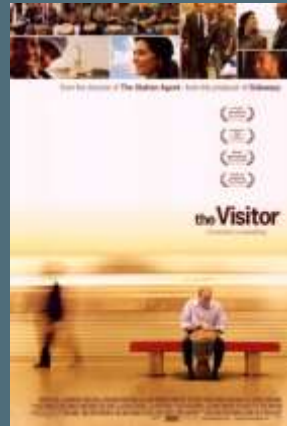
These serve as inspirational references for tone, style, visual, and storytelling.



Babel
(2006)



Under the
Same Moon
(2007)



The Visitor
(2008)

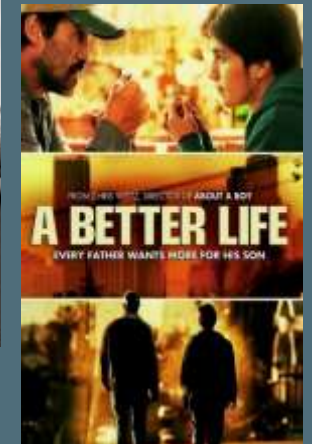
Minari
(2020)



Roma (2018)



A Better Life
(2011)



Location Inspiration

Building location Inspiration



Jail Location Inspiration (Alligator Alcatraz)



COLOR PALETTE GUIDE

TERESA & DON CHAVA STORY:



ELENA'S STORY:



LUZ'S STORY:



SOPHIA'S STORY:



MAX'S STORY:



DETENTION/ICE RAID/JAIL/ BUS DEPORTATION STORY:



UNIQUE ASPECTS "HOOK"

+ Our Primary Interest for Regional Premier is at Sundance Film Festival and World Premiere is at the Cannes Film Festival. (To achieve this, the film's nationality must be exclusively United States.)

The script features standout elements that make it both memorable and marketable:

Choral Structure: Four women (Luz, Elena, Sophia, Teresa) and an elderly couple (Don Chava) are united by their wounds and precarious circumstances, their lives interwoven by a fumigation notice that sets their fates in motion. This multifaceted narrative lends depth and universality to the story.

Organic Bilingualism: Comprising 90% English and 10% Spanish, the script authentically captures the Latino community of East LA, enhancing its appeal to global audiences and platforms like Netflix.

Commitment to Authentic Representation: The script is written with the profound artistry of Adriana Barraza, Edward James Olmos, America Ferrera and Selena Gomez in mind, performers who aren't only icons of cinema but lifelong activist for the Hispanic Community. We believe they will be interested, it's about bringing a lived in truth to these roles. By aligning with actors who have dedicated their platforms to migrants rights and social justice, their involvement would humanize immigration statistics, touching the hearts of audiences deeply.

Music as a Character: The integration of danzón (could be Boleros too) and hip-hop music not only sets the story's tone but also mirrors the characters' emotional journeys. Teresa and Don Chava's danzón represents healing, while Max's electronic beats conjure chaos.

These elements transform the script into a powerful reflection of the immigrant struggle, a bold cry against injustice, and a heartfelt ode to resilience, delivering an undeniable emotional impact.

CREATIVE TEAM

ANTONIO ZAMUDIO – Supernova Empire Pictures Co-Founder Producer, Director, Screenwriter and Actor.

Industrial Engineer with a postgraduate in Corporate Executive Management from Universidad Autónoma de Guadalajara (UAG, 2007). Specialized in Film Business, Executive Production, and Production at AMAPCIA (2016). Studied screenwriting at Sundance Institute's Sundance Collab. Honed acting at Stella Adler Academy in Los Angeles (2015), mastering the technique.

As producer and actor, key consultant in Mexico-Dominican Republic coproduction La Lucha de Ana (2010, funded by IBERMEDIA). Produced short Frida and the Lighthouse (2017). Starred as antagonist in La Lucha de Ana (2011), hailed as promising talent by El Heraldo (2010). Won International Best Actor at Woman Film Dominicana (2012); nominated for Best Lead Actor at Cineasta RD Awards (2012), La Silla Awards (2013), Palmas de Oro (2014), and Tamaulipas Film Festival (2014). Film ran 5 weeks at Mexico's Cineteca Nacional.



INGRID FRANKLIN DIAZ - Supernova Empire Pictures Co-Founder Producer, Screenwriter and Actress.

Ingrid Franklin is a versatile audiovisual professional, excelling as screenwriter, producer, and actress. She studied at the National University of Colombia (2011; 2014-2015), specializing in screenwriting, executive production, and management. She honed her acting at Ted Brunetti Studio and Margie Haber Studio. In 2024, based in Los Angeles, she starred in two feature films, enhancing her on-camera workshops in screenwriting, production, and acting, plus hands-on work on various film and TV projects, she blends creativity, analytical insight, and adaptability.



LEADS CHARACTERS DESCRIPTION

Character Prototype: TERESA

Age and Background: 69 years old, Mexican woman

Overview: A resilient farm laborer with maternal serenity, Teresa dreams of owning a home to honor her lost son. Sustained by her faith and love for Don Chava, her journey takes her from material hope to spiritual peace. Her emotional strength makes her captivating to audiences.

Audience Appeal. Teresa's resilience and unwavering love resonate deeply with audiences who cherish stories of sacrifice and faith, particularly within migratory contexts. Her emotional arc—from hope to acceptance—offers a powerful blend of heartbreak and inspiration.

Casting Reference: Academy Nominee for Best Performance by an Actress in a Supporting Role 2007

Adriana Barraza as Teresa.



Teresa was written for the legendary Adriana Barraza, demonstrating her skill in conveying dignity and restrained emotion. Her experience with resilient characters and her warm yet commanding presence capture Teresa's eternal love for Don Chava and the profound loss of Joaquín, infusing every scene with emotional weight. Barraza's mastery of portraying strong, complex women makes her ideal to embody Teresa, an unforgettable Latina matriarch

Character Prototype: DON CHAVA

Age and Background: 78 years old, Mexican man.

Overview: A wise calm. A farm laborer who protects Teresa after losing their son.

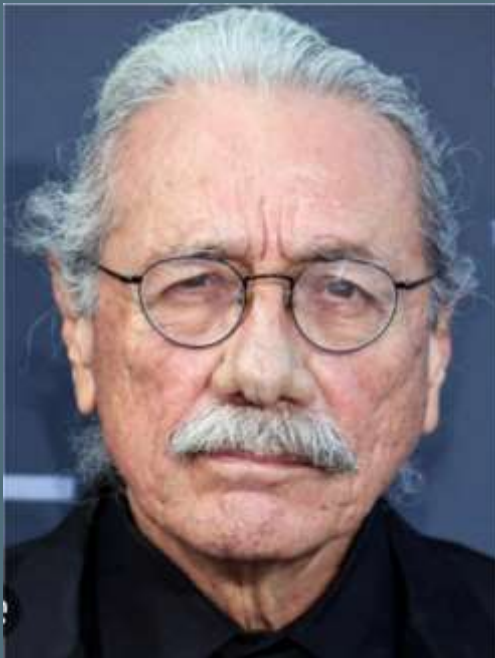
Arc: from fighting for a home to accepting love as home. Appealing for his dignity and devotion.

Audience Appeal: His dignity and eternal love inspire those seeking stories of resistance and humanity in elderly migrants.

Casting Reference:

Academy Nominee for Best Performance by an Actor in a Leading Role 1989

Edward James Olmos as Don Chava



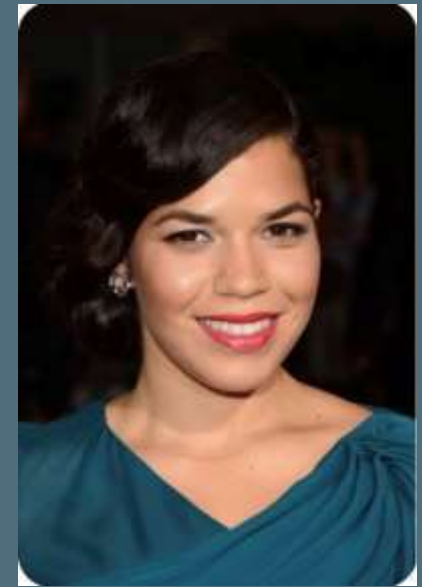
Don Chava was written for the Iconic Edward James Olmos, He embodies Don Chava's serene strength. His talent showcases his ability for roles of resilience and tenderness, ideal for a man who faces adversity with faith and love—a man of quiet strength whose eternal love for Teresa moves deeply. **We have already made first step initial direct contact with Edward James Olmos, Who is interested in reading the script and to know who will be directing. He provided his personal contact details.**

Character Prototype: Elena

Age and Background: 38 years old, Dominican, Honduran, Mexican woman.

Overview: Is a resilient mother fighting for her son Ethan amidst precarious circumstances. Her journey takes her from battling to remain in the U.S. to accepting deportation out of love, captivating audiences with her maternal sacrifice.

Audience Appeal: Her maternal sacrifice will resonate deeply with audiences who cherish stories of resilient mothers.



Casting Reference:

Academy Nominee for Best Performance by an Actress in a Supporting Role 2024

América Ferrera as Elena



América Ferrera should play Elena due to her ability to portray strong and vulnerable Latina women, as seen in *Real Women Have Curves* (2002) or *Barbie* (2023). Her empathy and emotional range perfectly capture the exhaustion and maternal love of a single mother fighting for her son against the threat of deportation. **We have already made first step initial direct contact with her, is interested in the story. She asked us to approach her through the casting director.**

Character Prototype: LUZ

Age and Background: 28 years old, Mexican woman

Overview: A dreamy and curious soul, Luz seeks love as a means to escape her precarious existence. Her journey takes her from naivety to resilience after facing betrayal, making her compelling through her personal growth and youthful empathy.

Appeal to the Audience: Luz's blend of innocence and growth strikes a chord with young people navigating their identities within migratory experiences, offering a relatable and inspiring figure.

Casting Reference:

Selena Gomez as Luz

Selena is ideal to play Elena because of her personal connection to immigration (her grandparents are Mexican), which brings authenticity. Her youth and charisma fits Luz, with her innocent and dreamy gaze, which conveys vulnerability and stellar longing with ethereal naturalness.

